



# ROUSH Front Splitter Kit

Kit Part Number 1310010803

Application: 2010-11 ROUSH Mustang

Note: Splitter only fits onto the 2010-11 ROUSH Front Fascia.

## Installation Instructions

Before installing your ROUSH Performance Product(s), read through the entire installation procedure and check to make sure all items are present. Contact ROUSH Customer Service at 1-800-59-ROUSH, 9:00 AM to 5:00 PM EST, weekdays, for any questions regarding fit, missing parts or instructions that are unclear to you.



# ROUSH

THE ART OF PERFORMANCE ENGINEERING



## Packaging List for ROUSH Front Splitter Kit

Part Description	ROUSH Part Number	Qty
<b>ROUSH Front Splitter Kit</b>	<b>1310010803</b>	<b>1</b>
Splitter-Front Fascia	131017D997	1
<b>Hardware Kit - Front Splitter</b>	<b>1310010803HK</b>	<b>1</b>
Bolt - M6 x 1.0 x 27.5mm	11-357-0269	9
Nut - M6 x 1.0	11-278-0260	9
Screw M4.2	W712919-S	2
Installation Instructions	1310R17D997IM	1

### Equipment and Supplies Required

- Phillips Screw Driver
- Ratchet – 1/4" Drive
- 5.5 mm Socket – 1/4" Drive
- 8 mm Socket – 1/4" Drive
- 10 mm Box-end Wrench
- Drill
- 5/16" Drill Bit
- Torque Wrench – Lb-in, 1/4" Drive

### Recommended Equipment and Supplies

- Masking Tape



## **LIMIT OF LIABILITY STATEMENT**

The information contained in this publication was accurate and in effect at the time the publication was approved for printing and is subject to change without notice or liability. ROUSH Performance Products (RPP) reserves the right to revise the information presented herein or to discontinue the production of parts described at any time.

## **SAFETY REQUIREMENTS**

**STOP! READ IMPORTANT SAFETY CAUTIONS AND WARNINGS BEFORE PROCEEDING.**

### **IMPORTANT SAFETY NOTICE**

Appropriate disassembly, assembly methods and procedures are essential to ensure the personal safety of the individual performing the kit installation. Improper installation due to the failure to correctly follow these instructions could cause personal injury or death. Read each step of the installation manual carefully before starting the actual installation.

1. Always wear safety glasses for eye protection.
2. Place ignition switch in the OFF position.
3. Always apply the parking brake when working on a vehicle.
4. Chock the front and rear tires to prevent unexpected vehicle movement.
5. If working without a lift, always consult vehicle manual for correct lifting specifications.
6. Operate the engine only in well-ventilated areas to avoid exposure to carbon monoxide.
7. Do not smoke or use flammable items near or around the fuel system.
8. Use chemicals and cleaners in well-ventilated areas.
9. Batteries produce explosive gases, which can cause personal injury. Therefore, do not allow flames, sparks or flammable substances to come near the battery.
10. Keep hands and any other objects away from the radiator fan blades.
11. Keep yourself and your clothing away from moving parts when the engine is running.
12. Do not wear loose clothing or jewelry that can get caught in rotating parts or scratch surface finishes.
13. Allow the engine, cooling system, brakes and exhaust to cool before working on a vehicle.

### **WORK SAFELY!**

Perform this installation on a good clean level surface for maximum safety and with the engine turned off.

1. Using a 1/4" drive ratchet with a 5.5 mm socket, remove nine (9) screws from the lower close-out panel; one (1) at each wheel well splash shield, four (4) at the front fascia and three (3) at the rear edge of the close-out panel . Refer to Figure 1. Remove the lower close-out panel and set aside for reinstallation.

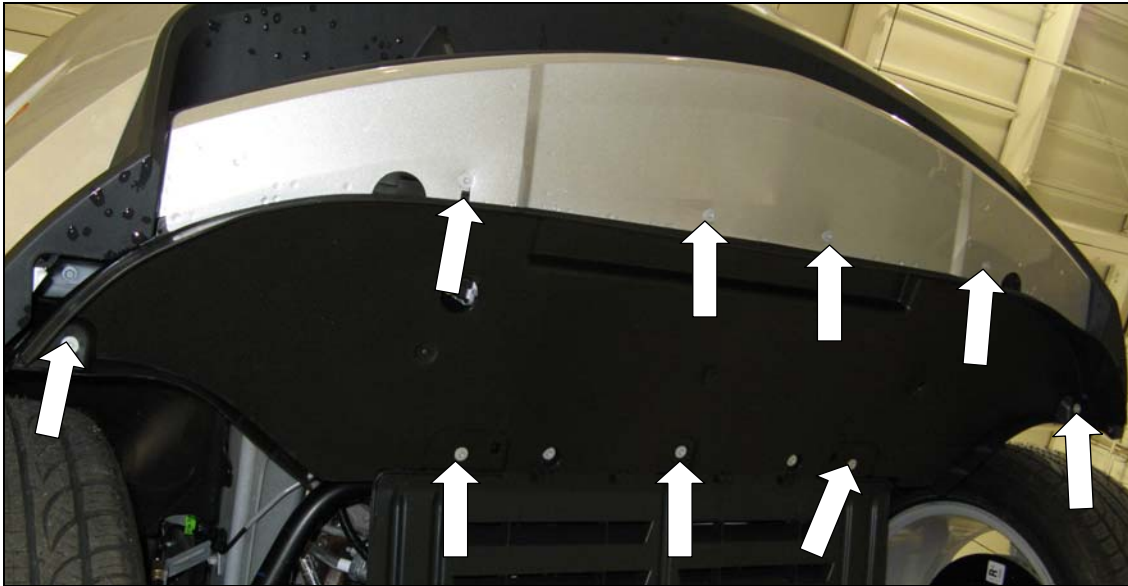


Figure 1

2. With an assistant holding the front splitter in position, install eight (8) M6 bolts (11-357-0269) and nuts (11-278-0260), as shown in Figures 2 and 3. Tighten and torque all nuts to 5 Nm (44 lb-in). Bolt hex-8 mm, nut-10 mm.



Figure 2



Figure 3

# ROUSH

THE ART OF PERFORMANCE ENGINEERING

3. With the Front Splitter securely fastened to the fascia, locate the dimple at the center of the part and slowly drill a 5/16" hole through the splitter and lower fascia. Refer to Figure 4. Be careful not to allow the drill bit to contact the upper surface of the fascia, as shown in Figure 5. Wrap the drill bit with masking tape, 1/2" from the tip of the drill bit, to act as a drill stop.

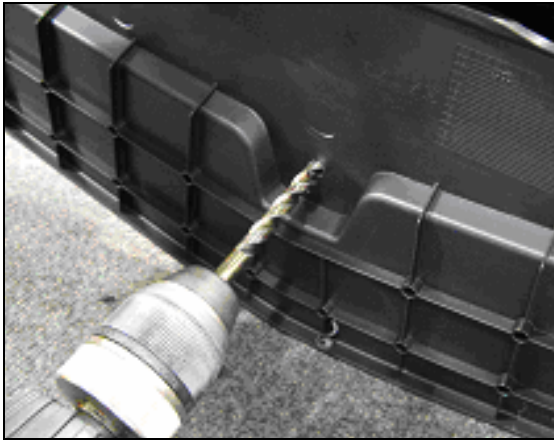


Figure 4



Figure 5

4. Install one (1) bolt (11-357-0269) and nut (11-278-0260) into the drilled hole at the center of the Splitter. Tighten and torque the nut to 5 Nm (44 lb-in). Refer to Figure 6.

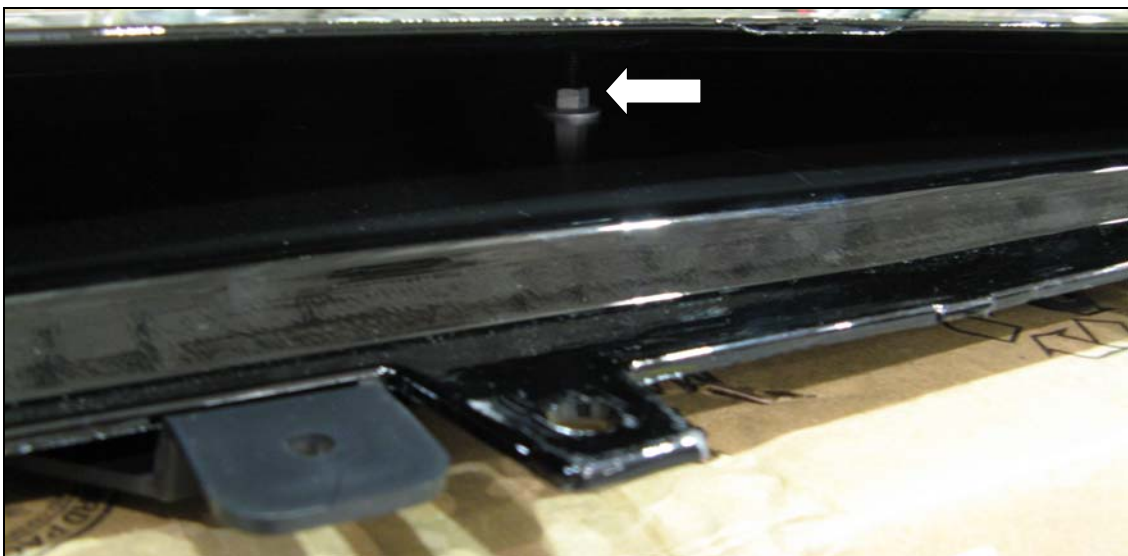


Figure 6



- Using a 1/4" drive ratchet with a 5.5 mm socket, reinstall the lower closeout panel using the nine (9) hex head screws previously removed in Step 1. Two (2) at the wheel well splash shields, three (3) at the sub frame and four (4) at the front fascia. Refer to Figure 7.

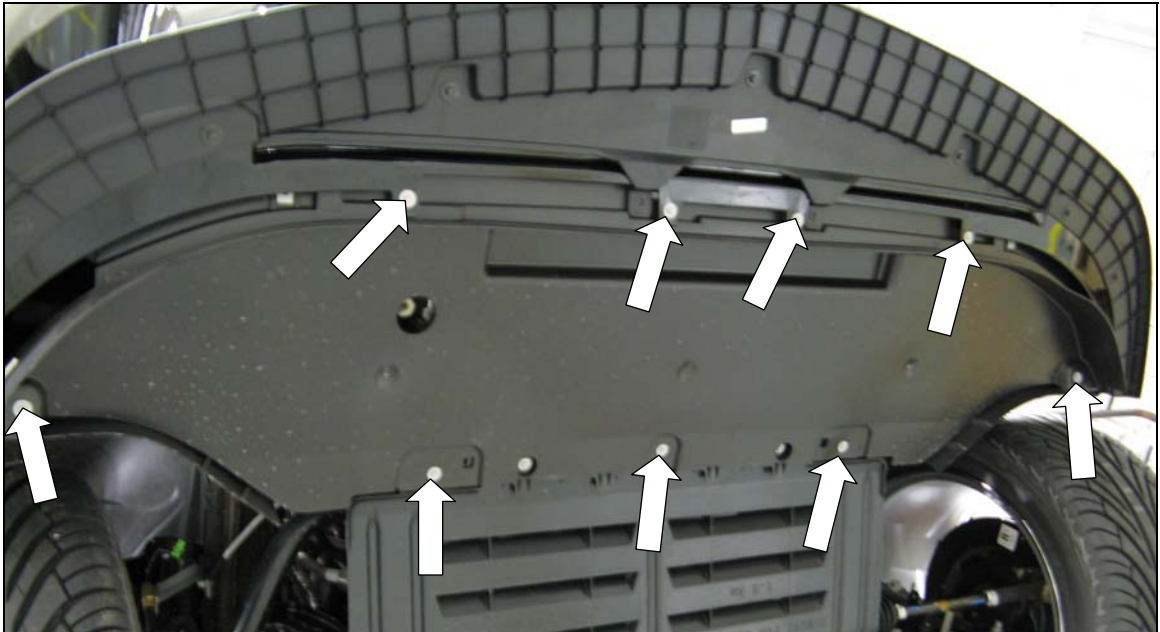


Figure 7

- Install two (2) Phillips head screws (W712919-S) at the rear of the Splitter to the clip nuts on the close out panel, as shown in Figure 8.



Figure 8



**Congratulations!!!** You have completed the installation of the ROUSH Performance Products, Front Splitter Kit. It is recommended that you save all parts removed from your vehicle during the installation of this kit.

## **WARRANTY**

All retail parts carry a 90-day warranty from the date of purchase. This warranty covers defects in materials or workmanship, and does not include (i) normal wear and tear, environmental conditions, improper installation; (ii) road hazards, misuse, abuse, neglect, accidents, collision, fire, theft, freezing, vandalism, riot, explosion, or objects striking the vehicle; (iii) misusing the vehicle, such as driving over curbs, overloading, racing, or using the vehicle as a stationary power source; (iv) altering, disassembling or modifying the parts; (v) defects caused or induced by failures, breakdowns, or damage by other parts, components or the vehicle; (vi) subjecting the parts to excessive moisture or water or any motor vehicle fluids (e.g.: oil, anti-freeze, battery acid, brake fluid, etc.); (vii) acts of God, natural disasters and other similar causes beyond the reasonable control of ROUSH; or (viii) application of chemicals that affect the parts. This Limited Warranty does not cover surface deterioration of paint, trim, and appearance items that result from use and/or exposure to the elements, such as stone chips, scratches, bird droppings, lightning, hail, windstorm, dings, dents, earthquake, road salt, tree sap, water or flood.

ROUSH SHALL NOT BE LIABLE TO REIMBURSE CUSTOMER/DEALER FOR INCIDENTAL OR CONSEQUENTIAL DAMAGES RESULTING FROM THE INSTALLATION OR USE OF ANY PRODUCT SOLD THROUGH THIS CATALOG OR ARISING OUT OF ANY BREACH OF WARRANTY. EXCEPT AS MAY BE STATED IN THIS CATALOG, ROUSH DISCLAIMS ALL EXPRESS AND IMPLIED WARRANTIES, INCLUDING THE WARRANTIES OF MERCHANTABILITY AND FITNESS FOR A PARTICULAR PURPOSE. IN NO EVENT SHALL ROUSH'S LIABILITY EXCEED THE PRICE PAID BY CUSTOMER/DEALER FOR PRODUCTS SOLD REGARDLESS IF ROUSH HAS BEEN ADVISED IN ADVANCE OF ANY POTENTIAL PROBLEM OR IF A CLAIM IS BASED ON CONTRACT, TORT, STRICT LIABILITY, PRODUCT LIABILITY OR OTHERWISE. SOME STATES DO NOT ALLOW THE EXCLUSION OR LIMITATION OF IMPLIED WARRANTIES OR THEIR DURATION, OR LIABILITY FOR INCIDENTAL OR CONSEQUENTIAL DAMAGES, SO THE ABOVE EXCLUSIONS OR LIMITATIONS MAY NOT APPLY.