



2015-2023 Mustang Fender Vent Heat Extractors - Painted Gloss Black

P/N: 422326 (R1320-FNDEXTKIT)
Application: 2015-2023 Mustang

Installation Instructions



Before installing your ROUSH Performance Product(s), read through the entire installation procedure and check to make sure all items are present. Contact ROUSH Customer Service at 1-800-59-ROUSH, weekdays from 9:00 AM to 5:00 PM EST, with any questions regarding fit, missing parts or instructions that are unclear to you.

422326 (R1320-FNDEXTKIT) Contents

Description	Part Number	Qty
HEAT EXTRACTORS - Fender	R1320-FNDEXTKIT	1
FENDER HEAT EXTRACTOR - LH	1320-16C803	1
FENDER HEAT EXTRACTOR - RH	1320-16C804	1
INNER FENDER CLOSE OUT - LH	1320-17D625	1
INNER FENDER CLOSE OUT - RH	1320-17D626	1
STUD - THREADED #6-32 x 1-1/4"	25112	12
NUT - #6-32 HEX FLANGE	37332	12
Push Nut - M6 x 1.0	0162872	6

EQUIPMENT AND SUPPLIES REQUIRED

- Metric Socket Set (deep and shallow)
- Dremel or other rotary cutting tool
- Painters Tape
- Permanent Marker
- Trim Removal Tool
- General automotive tools (pliers, needle nose, etc)
- 5/16" Drill Bit
- 1/4" Drill Bit
- Heat gun
- Digital Caliper
- Center Punch

LIMIT OF LIABILITY STATEMENT

The information contained in this publication was accurate and in effect at the time the publication was approved for printing and is subject to change without notice or liability. ROUSH Performance Products (RPP) reserves the right to revise the information presented herein or to discontinue the production of parts described at any time.

SAFETY REQUIREMENTS

STOP! READ IMPORTANT SAFETY CAUTIONS AND WARNINGS BEFORE PROCEEDING.

IMPORTANT SAFETY NOTICE

Appropriate disassembly, assembly methods and procedures are essential to ensure the personal safety of the individual performing the kit installation. Improper installation due to the failure to correctly follow these instructions could cause personal injury or death. Read each step of the installation manual carefully before starting the actual installation.

1. Always wear safety glasses for eye protection.
2. Place ignition switch in the OFF position.
3. Always apply the parking brake when working on a vehicle.
4. Chock the front and rear tires to prevent unexpected vehicle movement.
5. If working without a lift, always consult vehicle manual for correct lifting specifications.
6. Operate the engine only in well-ventilated areas to avoid exposure to carbon monoxide.
7. Do not smoke or use flammable items near or around the fuel system.
8. Use chemicals and cleaners in well-ventilated areas.
9. Batteries produce explosive gases, which can cause personal injury. Therefore, do not allow flames, sparks or flammable substances to come near the battery.
10. Keeps hands and any other objects away from the radiator fan blades.
11. Keep yourself and your clothing away from moving parts when the engine is running.
12. Do not wear loose clothing or jewelry that can get caught in rotating parts or scratch surface finishes.
13. Allow the engine, cooling system, brakes and exhaust to cool before working on a vehicle.

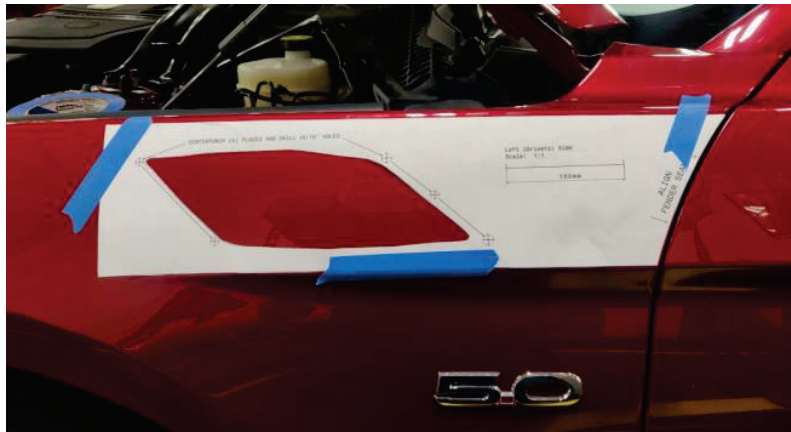
WORK SAFELY!

Perform this installation on a good clean level surface for maximum safety and with the engine turned off.

1. Use Fender Extractor Template available on Roushperformance.com, mark the appropriate cut points for the Fender Extractor, and tape the Fender Extractor Template onto the defined location as shown below. **Note: Must use A2 drawing paper to print out the template.**

Note: Steps to find the Fender Extractor Template on Roushperformance.com:

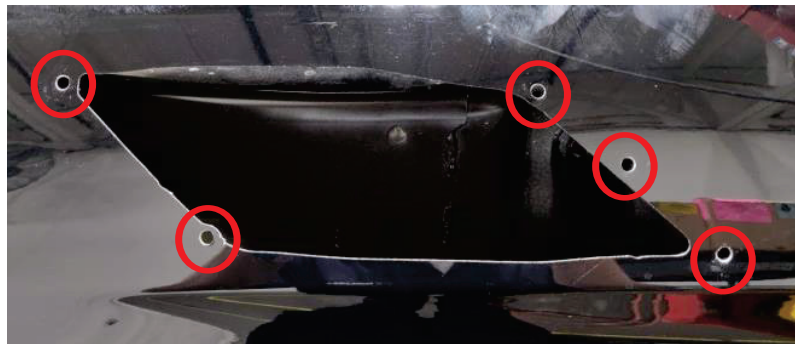
1. Go on Roushperformance.com, Search for PN:"422326".
2. Click on "2015-2023 Mustang Fender Vent Heat Extractors - Painted Gloss Black"
3. Scroll to the bottom of the web-page, find subtitle "Click Templates Below to Download:".
4. Click on "Fender Extractor Cutouts (Must Use A2 Drawing Paper)" to open the PDF template.
5. Printout the PDF template using **A2** drawing paper.
6. Check scale on the printed template by measuring reference line with a ruler.



2. Remove vehicle's fender liner and keep the factory hardware. Note: Re-install fender liner on the last step.

3. Use Dremel or other rotary cutting tool to cut off the hatched area of the template.

4. Use the printed template to center punch (5) Locations AND DRILL 5/16" HOLES using a 5/16" Drill Bit. **(MEASURE TWICE, CUT ONCE! THERE IS NO UNDO!)**



5. Apply Rust Inhibitor (NOT included in the kit) on cut area/holes of the vehicle's front fender side vent.

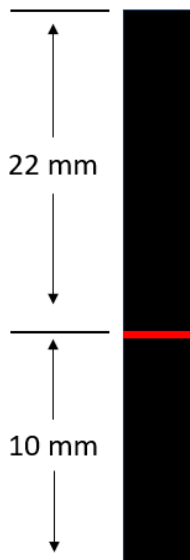
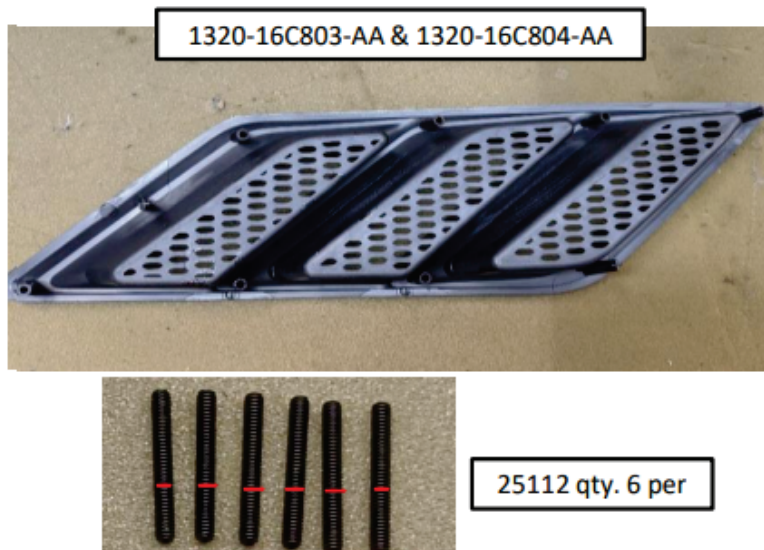
6. Repeat steps 1-5 for the opposite heat extractor.

7. Verify components (picture shown below) for heat extractor subassembly.

Mark STUD - THREADED #6-32 x 1-1/4" Qty. 6 (25112) at 10mm for depth of install.

Note: STUD (25112) Total length = 1-1/4" = 32 mm

STUD Protruding length = 32mm - 10mm = 22mm



STUD (25112) Part Dimensions (For Reference Only)

8. Install STUD - THREADED #6-32 x 1-1/4" Qty. 6 (25112) on each side fender extractor locations below, the install depth is 10mm. (When stud is installed onto the heat extractor subassembly, the protruding length of the stud should be 22mm, This will be used in step 12 for part alignment)

FENDER HEAT EXTRACTOR - RH:1320-16C804
FENDER HEAT EXTRACTOR - LH: 1320-16C803



NOTE: DO NOT OVER-TIGHTEN STUDS. OVER TIGHTENING WILL CAUSE THE A-SURFACE TO DIMPLE. USE DIGITAL CALIPER (OR A RULER) WHEN TIGHTENING FOR ACCURACY - DO NOT TIGHTEN BEYOND DEFINED SPEC!

9. Verify heat extractor subassembly appear as below,



10. Repeat Steps 7-9 for the opposite heat extractor.

11. Verify opening cut, all holes drilled as shown below (Qty.5 per fender side), debris cleared, and rust inhibitor (NOT included in the kit) applied.



12. Install heat extractor to the vehicle fender, make sure to use the corresponding heat extractor subassembly on the correct side. Note: align the drilled holes onto the heat extractor's studs to locate.



FENDER HEAT EXTRACTOR - RH:
1320-16C804

FENDER HEAT EXTRACTOR - LH:
1320-16C803

13. Check heat extractor's fitment, make sure it sits flush with the body and no gap is visible around edges.



14. Feed inner closeout panel in through opening between fender and chassis.

Note: Make sure fender liner has been removed (from step 1).

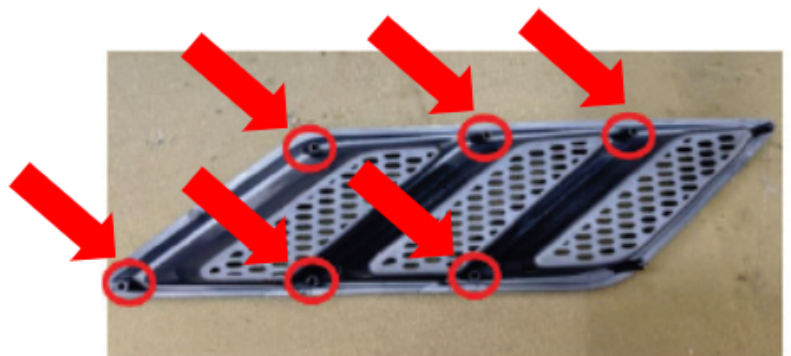
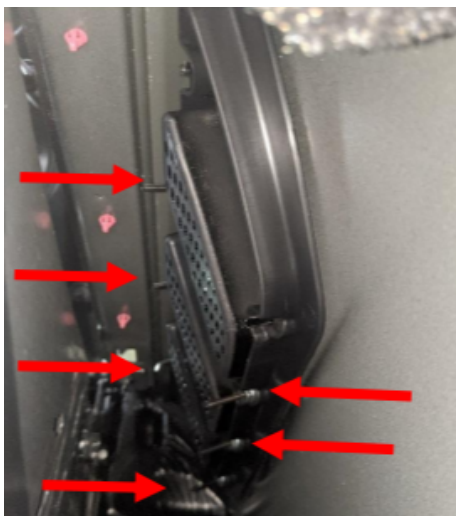
INNER FENDER CLOSE OUT - RH:1320-17D626

INNER FENDER CLOSE OUT - LH: 1320-17D625



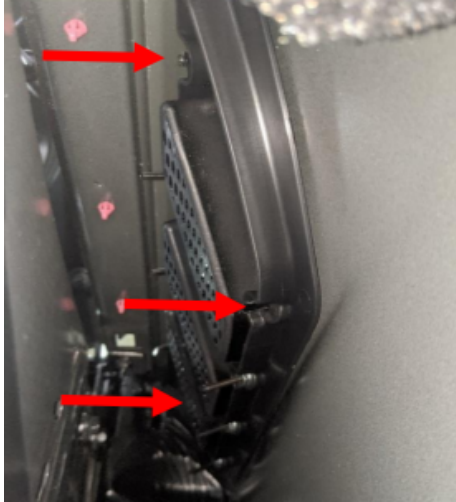
15. Install NUT - #6-32 HEX FLANGE (37332) Qty. 6 onto heat extractor studs (25112) at arrowed locations below. Torque nuts to 3.5 Nm.

NOTE: DO NOT OVER TORQUE FASTENERS, IT CAN CAUSE THE A-SURFACE TO DIMPLE.



Nuts (37332) Qty.6 locations. (For Reference Only)

16. Install Push Nut - M6 x 1.0 (0162872) Qty.3 over the molded posts at arrowed locations below.



Push nuts (0162872) Qty.3 locations. (For Reference Only)

17. Repeat Steps 11-16 for the opposite heat extractor.

18. Reinstall vehicle's fender liner.

19. The fender heat extractor installation is now complete.

