

# 2017+ F-150 Raptor Exhaust Kit

Installation Instructions

P/N: 422107 (1 1 17H0-5E292BLK)



# 2017+ Ford F-150 Raptor Off Road Exhaust Kit (3.5L ECO Boost)

Installation Instructions

P/N: 422107 (1 1 1 7H0-5E292BLK)

**OFF-ROAD USE ONLY**



**Application:** 2017+ Ford F-150 Raptor

**Important Note:**

Before installing your Off Road Exhaust Kit, please read through the installation procedure and verify that all items are present. If you are missing hardware or have any questions, please contact ROUSH Performance at 1-800-59-ROUSH, 9:00 AM to 5:00 PM weekdays.

**TABLE OF CONTENTS**

Packaging List for Kit 422107 .....3  
Equipment and Supplies Required.....3  
Limit of Liability Statement.....4  
Safety Precautions .....4  
Work Safely! .....4  
Section A – Disassembly.....5  
Section B – Assembly .....6

**PACKAGING LIST FOR KIT 422107**

Description	Part Number	Quantity
Muffler Assembly Bullet RH	1117HO-5230	1
Muffler Assembly Bullet LH	1117HO-5231	1
Clamp 3"	10-0439	4
Clamp 2.75"	10271	2
Over Axle Pipe Driver Side	1117HO-5C264	1
Over Axle Pipe Passenger Side	1117HO-5C265	1
Exhaust Tip 4.5" Black Coated with ROUSH Logo	1117HO-5230TIPB	2
Stickers	ROUSH-STKR-7x1.25	2

**EQUIPMENT AND SUPPLIES REQUIRED**

- Flat-Head Screwdriver
- Ratchet with Extensions
- Metric Socket Sets (deep recommended)
- Torque Wrench

**If you are missing any items, please call us toll free at 1-800-59-ROUSH.**

## LIMIT OF LIABILITY STATEMENT

The information contained in this publication was accurate and in effect at the time the publication was approved for printing and is subject to change without notice or liability. ROUSH Performance Products (RPP) reserves the right to revise the information presented herein or to discontinue the production of parts described at any time.

## SAFETY PRECAUTIONS



### **CAREFULLY READ THE IMPORTANT SAFETY PRECAUTIONS and WARNINGS BEFORE PROCEEDING WITH THE INSTALLATION!**

Appropriate disassembly, assembly methods and procedures are essential to ensure the personal safety of the individual performing the kit installation. Improper installation due to the failure to correctly follow these instructions could cause personal injury or death. Read each step of the installation manual carefully before starting the installation.

- Always wear safety glasses for eye protection.
- Place ignition switch in the OFF position.
- Always apply the parking brake when working on a vehicle.
- Block the front and rear tire surface to prevent unexpected vehicle movement.
- If working with a lift, always consult vehicle manual for correct lifting specifications.
- Operate the engine only in well-ventilated areas to avoid exposure to carbon monoxide.
- Do not smoke or use flammable items near or around the fuel system.
- Use chemicals and cleaners in well-ventilated areas.
- Batteries produce explosive gases, which can cause personal injury. Therefore, do not allow flames, sparks or flammable substances to come near the battery.
- Keep hands and any other objects away from the radiator fan blades.
- Keep yourself and your clothing away from moving parts when the engine is running.
- Do not wear loose clothing or jewelry that can get caught in rotating parts or scratch surface finishes.
- Allow the engine, cooling system, brakes and exhaust to cool before working on a vehicle.

## WORK SAFELY!

Perform this installation on a good clean level surface for maximum safety and with the engine turned off.



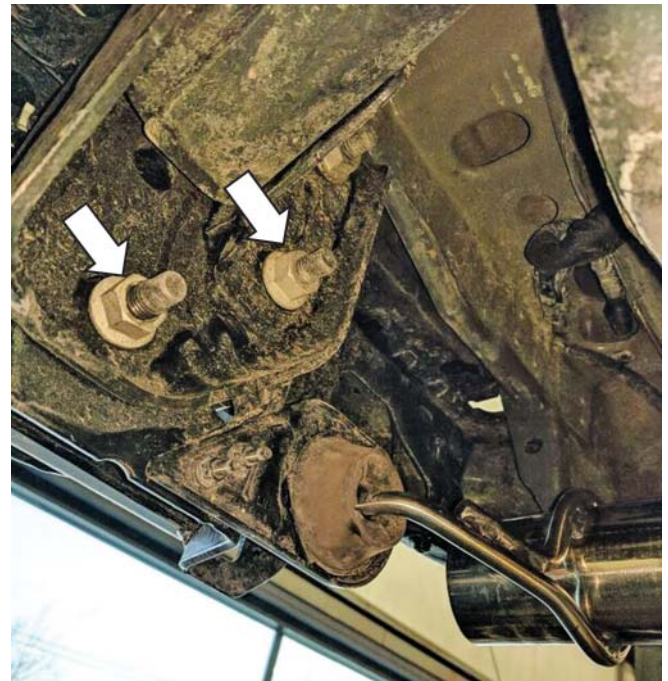
### SECTION A – DISASSEMBLY

The following section will guide you through the disassembly and removal of the stock components. Longer wheelbase vehicles will also have an intermediate pipe (not shown) between the factory resonator and the muffler.

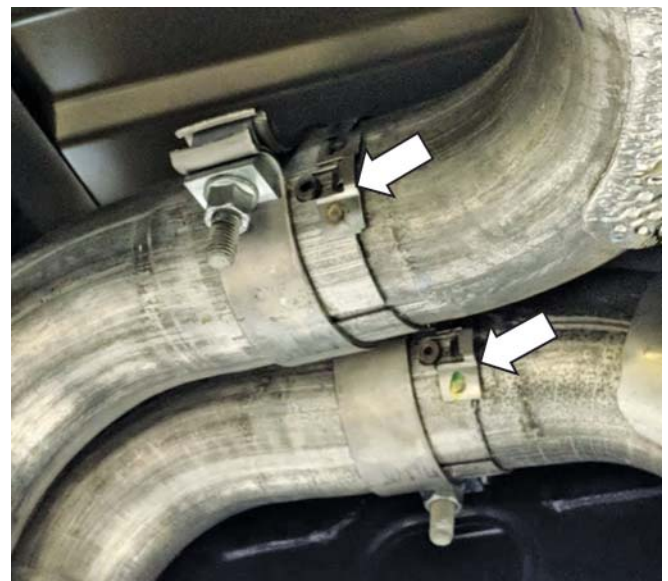
1. Lower the spare tire according to the owner's manual.
2. Loosen the clamps that separate the intermediate pipes to the over-axle rear tailpipes and slide out of the way. (15 mm socket)



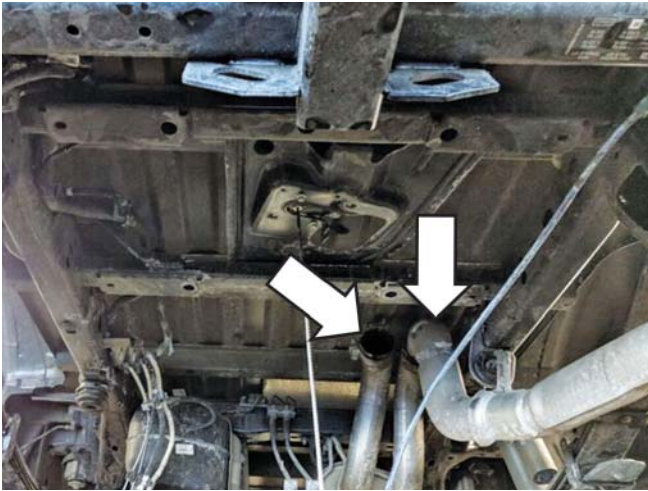
3. Remove the rear exhaust hangers holding the tips to the rear bumper bracket, and slide off of the hanger. (10 mm socket)



4. Remove the driver and passenger side of the over-axle pipe from the vehicle by using a flat-head screwdriver to bend up the tab on the exhaust alignment feature. Proceed with the removal process.







Driver side removed; remove passenger side

5. Loosen the front intermediate pipe clamps. (15 mm socket)



Front of vehicle

6. Remove the intermediate pipe and the muffler from the vehicle by sliding towards the rear of vehicle.

## SECTION B – ASSEMBLY

The following section will guide you through the assembly and installation of the ROUSH components.

### EXHAUST HARDWARE INSTALL

1. Slide the new 2.75" clamp (PN: 10271) onto the driver side bullet muffler (PN: 1117HO-5231) and insert it into the factory system as shown. Be sure to insert the new hanger onto the over-axle isolator before sliding it onto the front axle pipe.

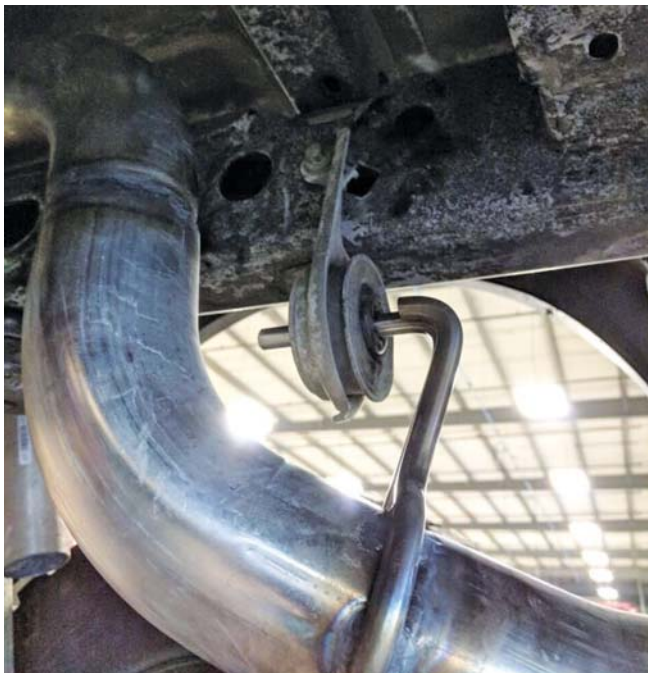


2. Install the passenger side bullet muffler (PN: 1117HO-5230) onto the OEM front section of the exhaust as shown. Be sure to align the exhaust hanger in the isolator.

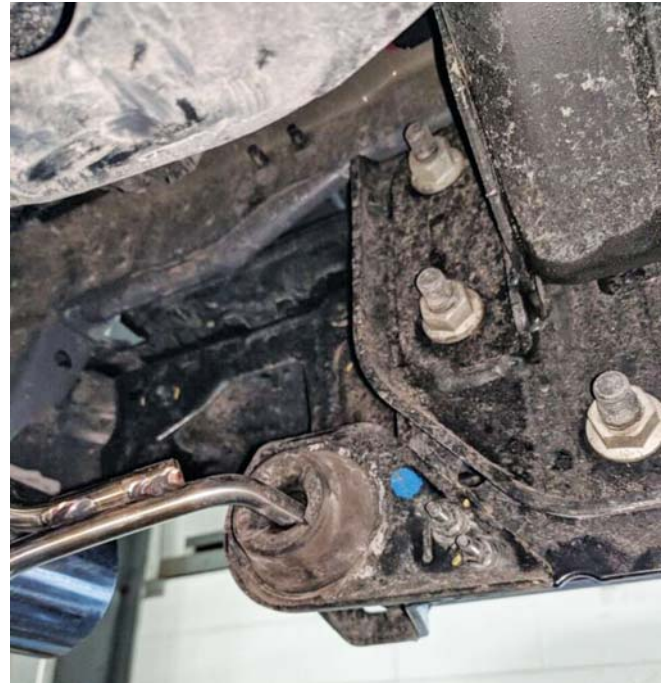




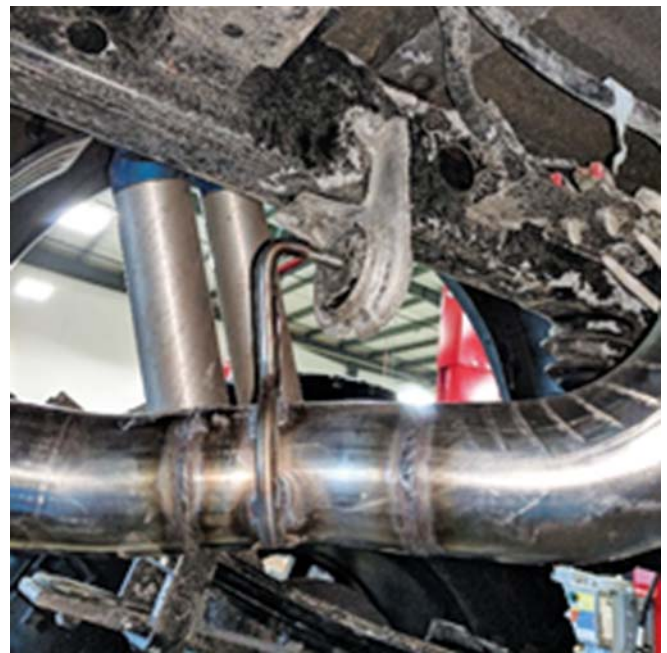
3. Install a new 3" clamp (PN: 10-0439) over the passenger over-axle pipe (PN: 1117HO-5C265) and install the passenger over-axle pipe onto the vehicle. Be sure to first align the hanger to the isolator.



4. Slide the hanger removed during step 3 of the Disassembly procedure and install it on the new rear hanger. (10 mm socket) Torque the bolts to 25 Nm.



5. Slide a new 3" clamp (PN: 10-0439) onto the passenger side over-axle pipe (PN: 1117HO-5C264). Insert the hanger through the isolator before aligning the system to the driver side bullet muffler.

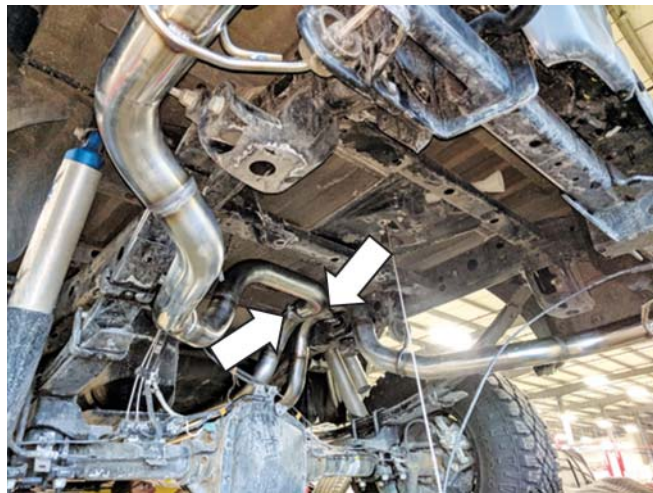


6. Slide the driver side hanger removed during step 3 of the Disassembly procedure onto the new rear hanger. (10 mm socket) Torque the bolts to 25 Nm.





The clamp orientation is shown.



7. Slide the 3" clamps (PN: 10-0439) onto the exhaust tips and slide onto the rest of the system. Align the tips evenly on both sides of the vehicle.

8. Starting from the front of the vehicle, tighten the clamps in the following order with the torque values. Be sure the system is aligned properly:
  - a. Front 2.75" and 3" clamps: 55 Nm
  - b. Over-axle 3" clamps: 55 Nm
  - c. Tip 3" clamps: 55 Nm
9. Reinstall the spare tire according to the owner's manual.

**Congratulations**, the installation is complete!