

# 2018 Super Duty DPF Back Exhaust Kit

Installation Instructions

P/N: 422126 (1818-5G267)



**ROUSH**  
PERFORMANCE

# 2018+ Ford Super Duty DPF Back Exhaust Kit

## Installation Instructions

P/N: 422126 (1818-5G2617)



**Application:** 2017+ Ford Super Duty 6.7L Diesel

**Important Note:**

Before installing the ROUSH Performance Product, please read through the installation procedure and verify that all items are present. If you are missing hardware or have any questions, please contact ROUSH Performance at 1-800-59-ROUSH, 9:00 AM to 5:00 PM EST.

**Table of Contents**

Packing List for Super Duty DPF Exhaust Kit .....3  
Equipment and Supplies Required.....3  
Limit of Liability Statement.....3  
Safety Precautions .....3  
Work Safely! .....3  
Section A – Disassembly.....4  
Section B – Assembly .....4

## PACKING LIST FOR SUPER DUTY DPF EXHAUST KIT

Description	Part Number	Quantity
DPF-Back Pipe with Welded Vented Tip Assembly	1818-5G267	1
6.7L Exhaust Gasket	BC3Z-5E241	1

## EQUIPMENT AND SUPPLIES REQUIRED

- 15/16" Wrench
- Ratchet with Extensions
- Metric Socket 15 mm (deep recommended)
- Torque Wrench
- Anti-seize

If you are missing any items, please call us toll free at 1-800-59-ROUSH.

## LIMIT OF LIABILITY STATEMENT

The information contained in this publication was accurate and in effect at the time the publication was approved for printing and is subject to change without notice or liability. ROUSH Performance Products (RPP) reserves the right to revise the information presented herein or to discontinue the production of parts described at any time.

## SAFETY PRECAUTIONS



### CAREFULLY READ THE IMPORTANT SAFETY PRECAUTIONS and WARNINGS BEFORE PROCEEDING WITH THE INSTALLATION!

Appropriate disassembly, assembly methods and procedures are essential to ensure the personal safety of the individual performing the kit installation. Improper installation due to the failure to correctly follow these instructions could cause personal injury or death. Read each step of the installation manual carefully before starting the installation.

- Always wear safety glasses for eye protection.
- Place ignition switch in the OFF position.
- Always apply the parking brake when working on a vehicle.
- Block the front and rear tire surface to prevent unexpected vehicle movement.
- If working with a lift, always consult vehicle manual for correct lifting specifications.
- Operate the engine only in well-ventilated areas to avoid exposure to carbon monoxide.
- Do not smoke or use flammable items near or around the fuel system.
- Use chemicals and cleaners in well-ventilated areas.
- Batteries produce explosive gases, which can cause personal injury. Therefore, do not allow flames, sparks or flammable substances to come near the battery.
- Keeps hands and any other objects away from the radiator fan blades.
- Keep yourself and your clothing away from moving parts when the engine is running.
- Do not wear loose clothing or jewelry that can get caught in rotating parts or scratch surface finishes.
- Allow the engine, cooling system, brakes and exhaust to cool before working on a vehicle.

## WORK SAFELY!

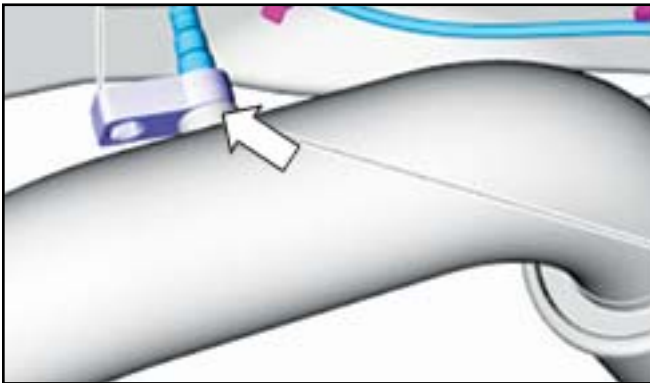
Perform this installation on a good clean level surface for maximum safety and with the engine turned off.

## SECTION A – DISASSEMBLY

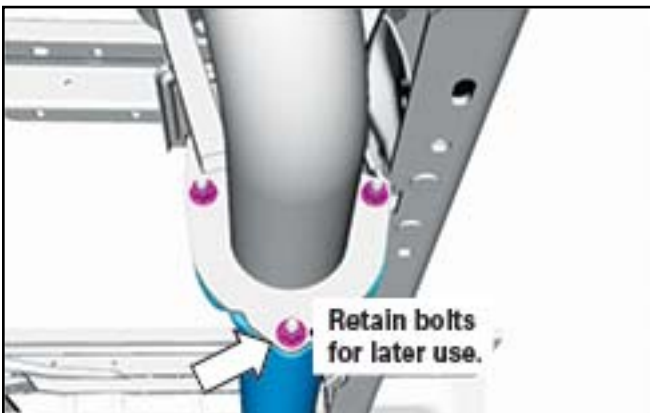
The following section will guide you through the disassembly and removal of the stock components. Longer wheelbase vehicles will also have an intermediate pipe (not shown) between the factory resonator and the muffler.

1. Remove the particulate matter sensor from vehicle using a 15/16" wrench or crows foot.

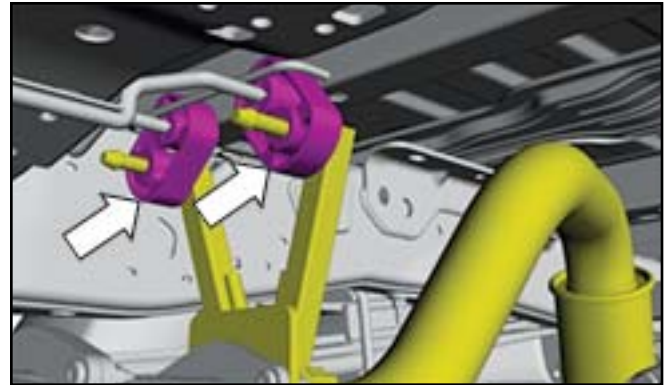
**NOTE:** Heat may be required to loosen sensor. Do not use open flame.



2. Remove the three (3) bolts from the flange securing the over axle pipe to the DPF flange (15 mm).



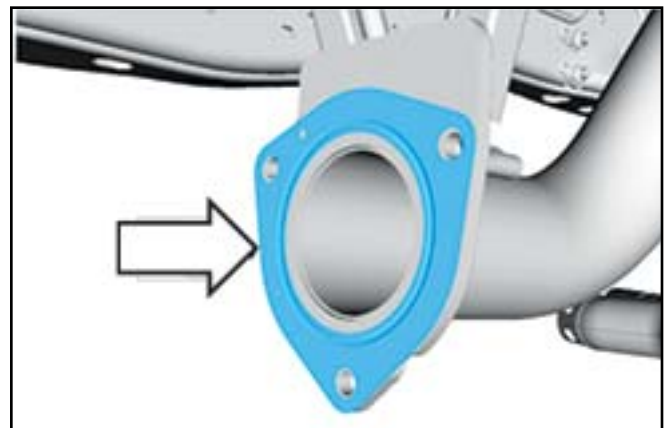
3. Detach the front isolators from the vehicle.



4. Slide the tailpipe assembly towards the rear of the vehicle, out of the isolator, and remove the assembly from the vehicle.



5. Remove the factory exhaust gasket.



## SECTION B – ASSEMBLY

The following section will guide you through the assembly and installation of the ROUSH components.

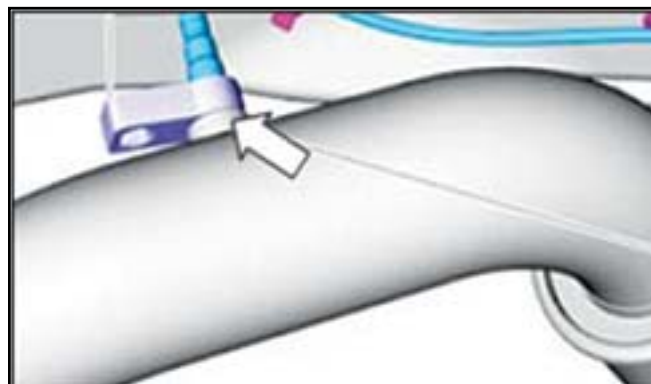
### EXHAUST HARDWARE INSTALL

1. Place the new exhaust gasket (PN: BC3Z-5E241-A) over the factory studs on the vehicle.

2. Install the DPF back exhaust (PN: 1818-5G267) onto the vehicle by first sliding the rear hanger onto the isolator.



5. Apply nickel-free anti-seize during installation of particulate matter sensor. Tighten sensor to 35 lb-ft (48 Nm).



**Congratulations**, the installation is complete!

3. Push the front isolators onto the ROUSH system as shown and align to the factory studs.



4. Install the three (3) 15 mm bolts removed in step 2 of the Disassembly section and torque to 55 Nm (41 ft lb).

Be sure to align exhaust tips before tightening.